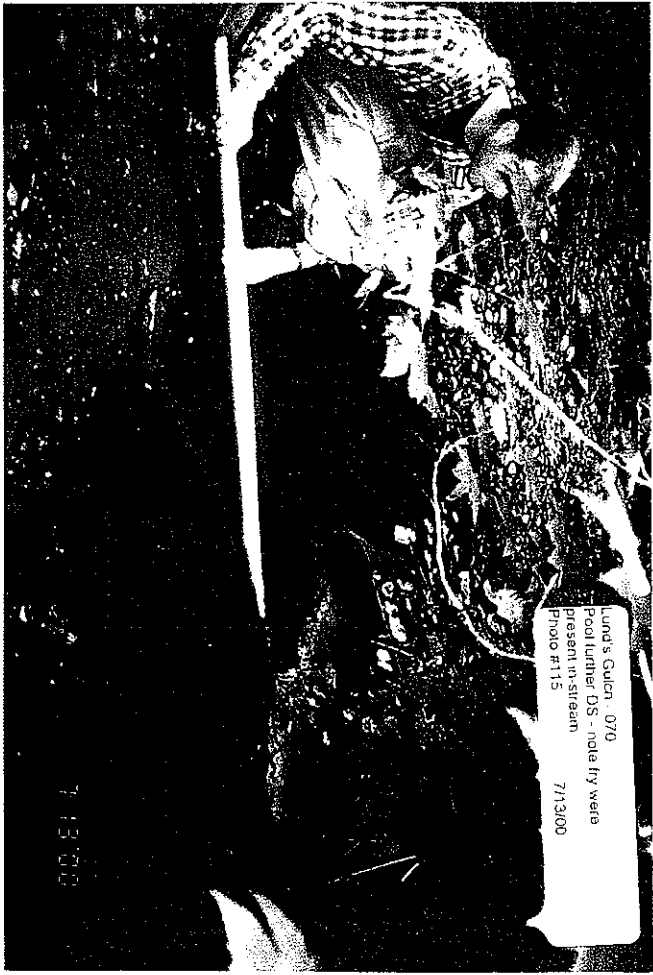
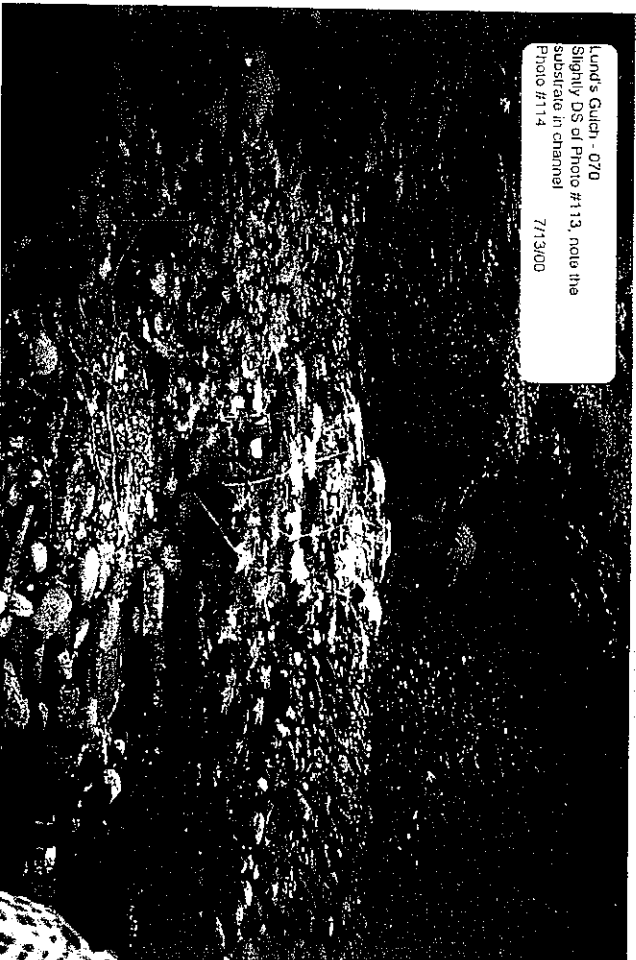




Lund's Gulch - 070
Stream and riparian downstream
Photo #115
7/13/00



Lund's Gulch - 070
Pool further DS - note for weeds
present in stream
Photo #115
7/13/00

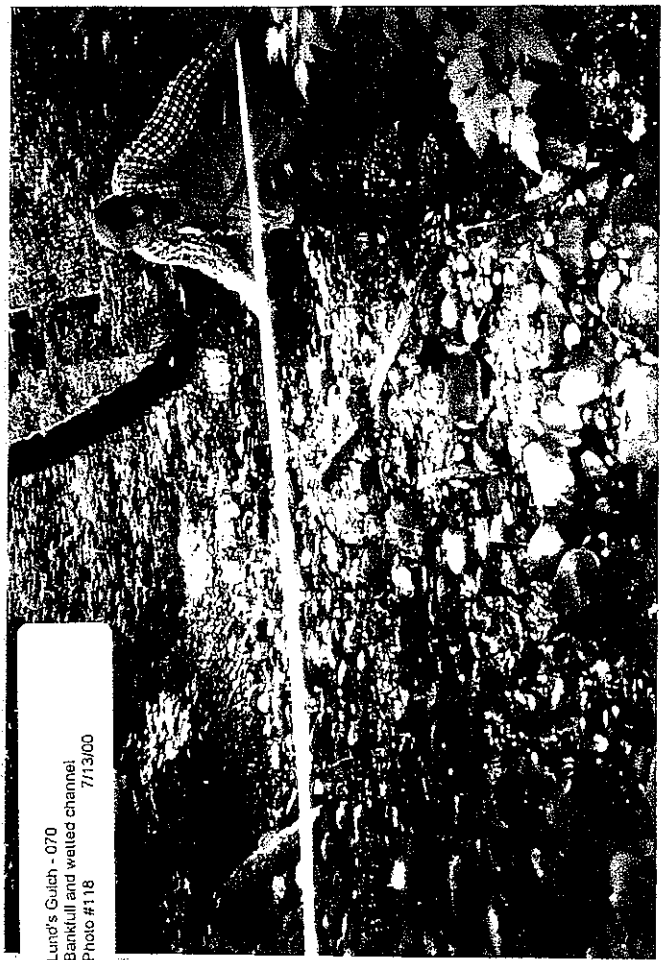


Lund's Gulch - 070
Slightly DS of Photo #113, note the
substrate in channel
Photo #114
7/13/00



Lund's Gulch - 070
LUS at 070 within the city limits of
Lynwood
Photo #113
7/13/00

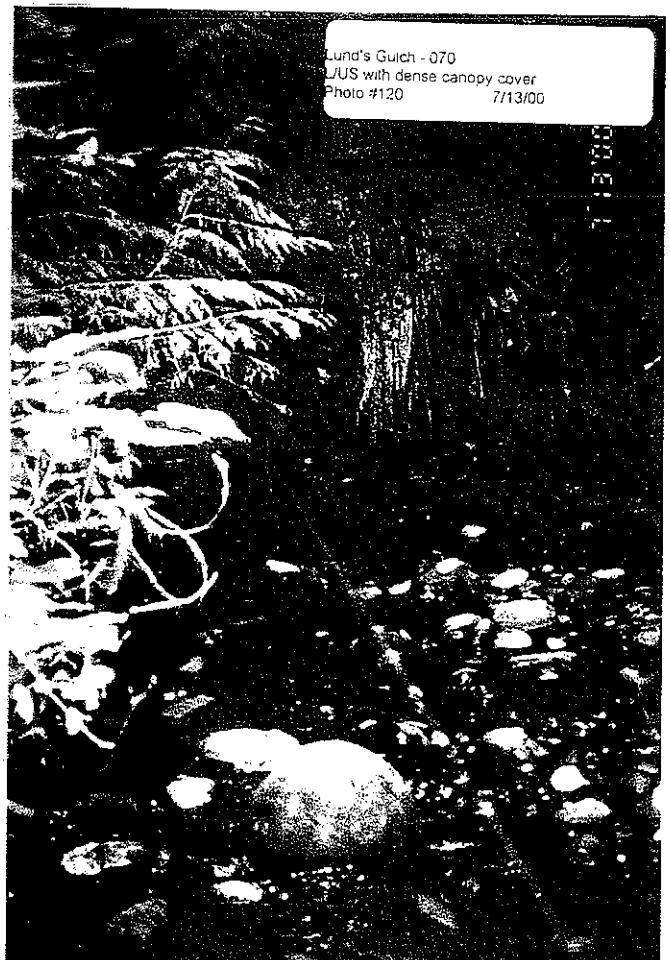
Lund's Gulch - 070
Stream and riparian downstream
Photo #117 7/13/00



Lund's Gulch - 070
Bankfull and wetted channel
Photo #118 7/13/00



Lund's Gulch - 070
Large wood in-stream and snag
at channel's edge
Photo #119 7/13/00



Lund's Gulch - 070
L/US with dense canopy cover
Photo #120 7/13/00