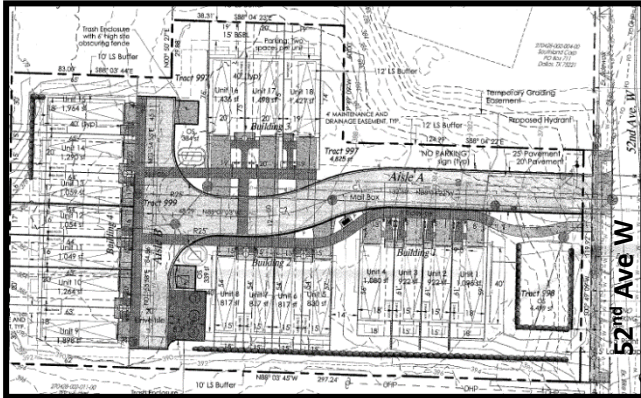


Park Lane Townhomes 18-Unit Development



- **Location:** 21216 52Nd Ave W
- **Zoning:** Medium Density Multi-household RMM
- **Applicant:** Monterra Partners, LLC
- **Description:** A 1.01 acre parcel in size has preliminary approval to subdivide into 18 lots for developing 18 townhome units in four separate buildings. Access is from 52nd Ave W via private driveway. Frontage improvements include 10' pedestrian activity area.
- **Status:** Preliminary Plat approved. Awaiting application for civil and building permits.