




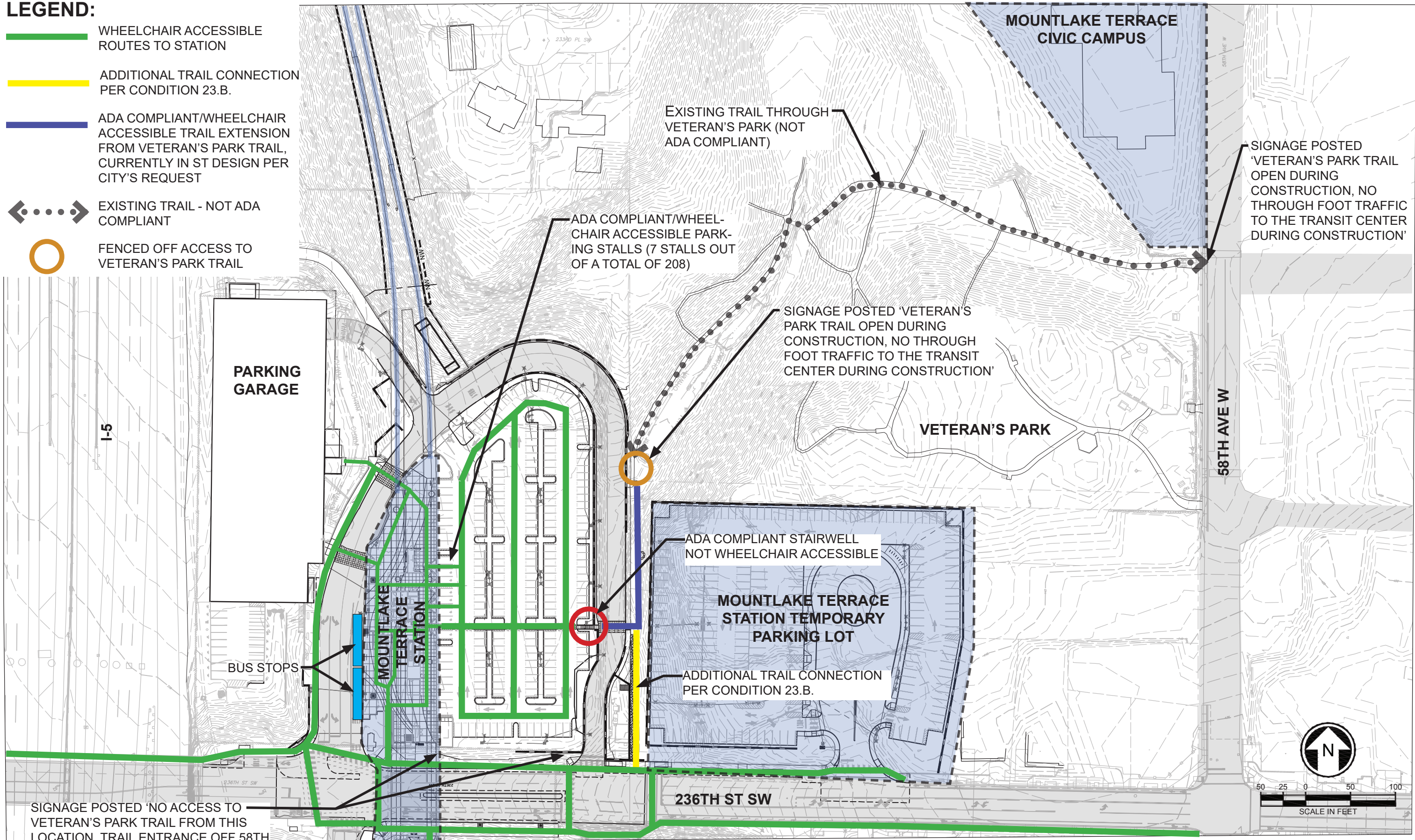


**LEGEND:**

-  WHEELCHAIR ACCESSIBLE ROUTES TO STATION
-  ADDITIONAL TRAIL CONNECTION PER CONDITION 23.B.
-  ADA COMPLIANT/WHEELCHAIR ACCESSIBLE TRAIL EXTENSION FROM VETERAN'S PARK TRAIL, CURRENTLY IN ST DESIGN PER CITY'S REQUEST
-  EXISTING TRAIL - NOT ADA COMPLIANT
-  FENCED OFF ACCESS TO VETERAN'S PARK TRAIL



06/20/19 | 3:35 PM | JLOGAN C:\CADD\BIP\WV\WESTCOAST\TULO\GANDMS8316\MLT\_236TH TRAIL CONNECTIONS SITE PLAN.DWG

DESIGNED BY:	
DRAWN BY:	
CHECKED BY:	
APPROVED BY:	

SUBMITTED BY:	
DATE:	
REVIEWED BY:	
DATE:	

**HNTB Jacobs** trusted design partners

LINE IS 1" AT FULL SCALE

**SOUNDTRANSIT**

SCALE:	
FILENAME:	MLT_236TH TRAIL CONNECTIONS SITE PLAN
CONTRACT No.:	
DATE:	

LYNNWOOD LINK EXTENSION  
MOUNTLAKE TERRACE STATION  
VETERAN'S PARK AND CIVIC CAMPUS  
ACCESS ROUTES AND TRAIL  
SIGNAGE LOCATIONS

DRAWING No.:	
LOCATION ID:	
SHEET No.:	REV: