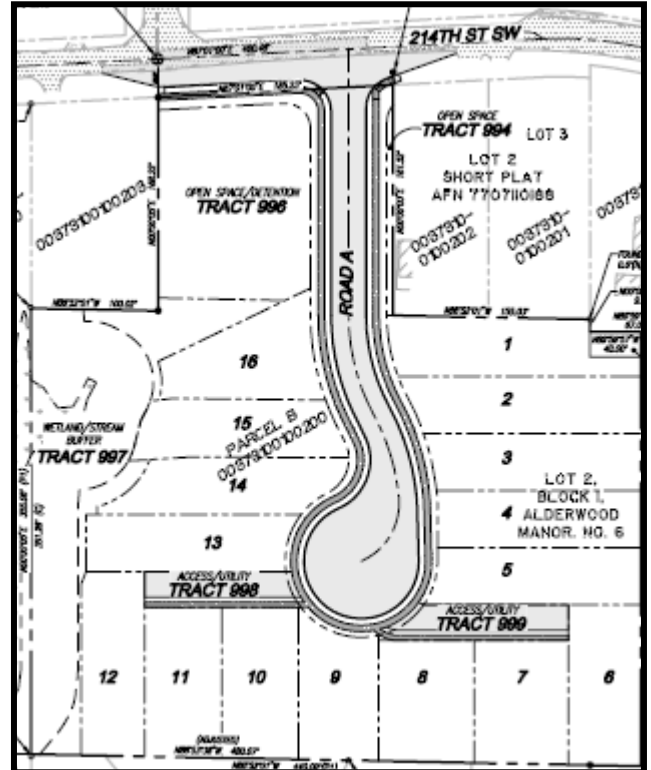


Shadow Creek Subdivision

16 - Lot Development

37XX 214th St SW



Zoning: Single-Household Residential 7200 (RS 7200)

Applicant: Land Pro Group

Description: A 4.6 acre property has received approval to be divided into 16 single-household lots. Plat development includes the creation of a new city street, and frontage improvements along 214th St SW wetland protection and stream mitigation.

Status: Under construction